

CLEOPATRA'S FAN

Designed by Ramona Rose and RK
www.ramonarose.net

Featuring TREASURES
OF ALEXANDRIA STUDIO
RK



Finished quilt measures: 82" x 88"


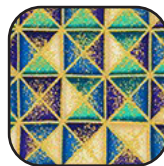

Quilt shown in "JEWEL" colorstory. For alternate colorstories see pages 11-15.

Difficulty Rating: **Advanced**

ROBERT KAUFMAN
F A B R I C S

For questions about this pattern, please email Patterns@RobertKaufman.com.

Fabric amounts based on yardage that is 42" wide.

Color	Fabric	Name/SKU	Yardage	Color	Fabric	Name/SKU	Yardage
	S	SRKM-18853-81 TURQUOISE	5/8 yards		Binding*	SRKM-18852-201 JEWEL	2/3 yard
						<i>*Also used for Fabric P</i>	
	aa	K001-1339 SNOW	5 yards	<div>You will also need: 7-1/2 yards for backing</div>			
Copyright 2019, Robert Kaufman For individual use only - Not for resale							

Notes Before You Begin

- Read through all of the instructions before beginning.
- All of the seam allowances are 1/4" unless otherwise noted.
- Press seam allowances open unless otherwise noted.
- Width of fabric (WOF) is equal to at least 42" wide.
- Right sides together has been abbreviated to RST.
- Remember to measure twice and cut once!

Printing the Templates

- Print pages 8-10 at 100%. Trace the templates to template plastic and then cut out along the black lines.

Cutting Instructions

From Fabrics A-S:

Fold each fabric in half with the selvages together, so that you have two layers of fabric. Cut three "bb" template sets and three "cc" template sets from each layer, aligning the arrows with the grain of fabric. Because you are cutting through two layers, you are cutting paired mirrored images.

You will have fifty-seven sets each of "bb" and "cc" pieces.

From six of your favorite prints, cut one additional set of "bb" pieces from each of three of the prints and one additional set of "cc" pieces from each of the other three prints.

You will now have a total of sixty sets each of bb and cc.

From Fabric aa:

Fold fabric in half with the selvages together, so that you have two layers of fabric. Cut sixty "aa" template sets, aligning the arrows with the grain of fabric.

From the Binding Fabric, cut:
nine 2-1/2" x WOF strips

Assembly Instructions

Each block is made up of three different fabrics: the background (Fabric aa) and two prints chosen from Fabrics A-S (or Fabrics A-N for the Neutral Colorstory). These two prints will be referred to as "bb" and "cc" on the templates and illustrations.

Step 1: Assemble the Blocks

- Pair up the fabrics into block sets. You may follow the fabric layout of the sample quilt, or pair the fabrics to your own liking. You will need one set of background pieces, one set of bb pieces and one set of cc pieces for each block.
- Lay the pieces out using fig 1 as a reference before you begin sewing.

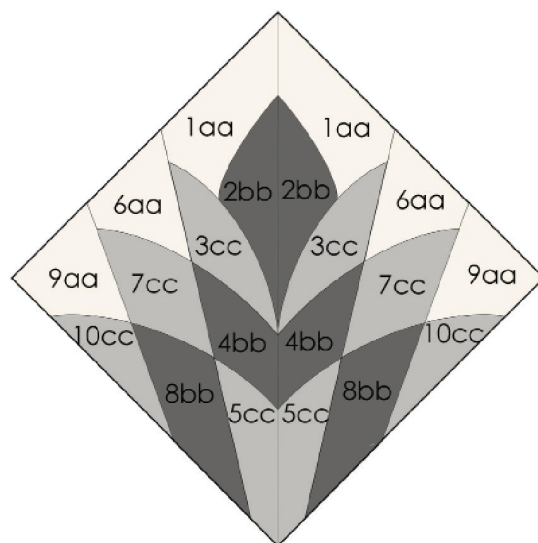


fig. 1



fig. 2

- Sew piece 1 to piece 2 (fig. 2).
- Next, sew piece 3 to pieces 1 & 2, then sew 4 & 5 to piece 3 in numerical order to create column 1 (fig. 3).

Always press the seam allowances toward the larger numbered piece (ie, the seam between 1 and 2 goes toward the 2.). The column seams are pressed toward the 9-10 column, and the center block seam is pressed open.



fig. 3



fig. 4

- Sew pieces 6, 7 and 8 together as pictured in fig. 4, to make column 2.
- Sew piece 9 to 10 to create column 3 (fig. 5).

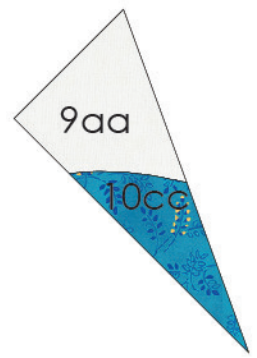


fig. 5

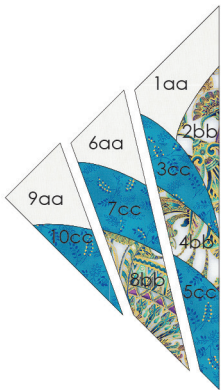


fig. 6

- Sew Column 1, 2 & 3 together to make a half block.
- Repeat the steps on the remaining pieces to make the second half of the block.
- Sew the two halves together and press the seam allowance open to complete the block.



fig. 7

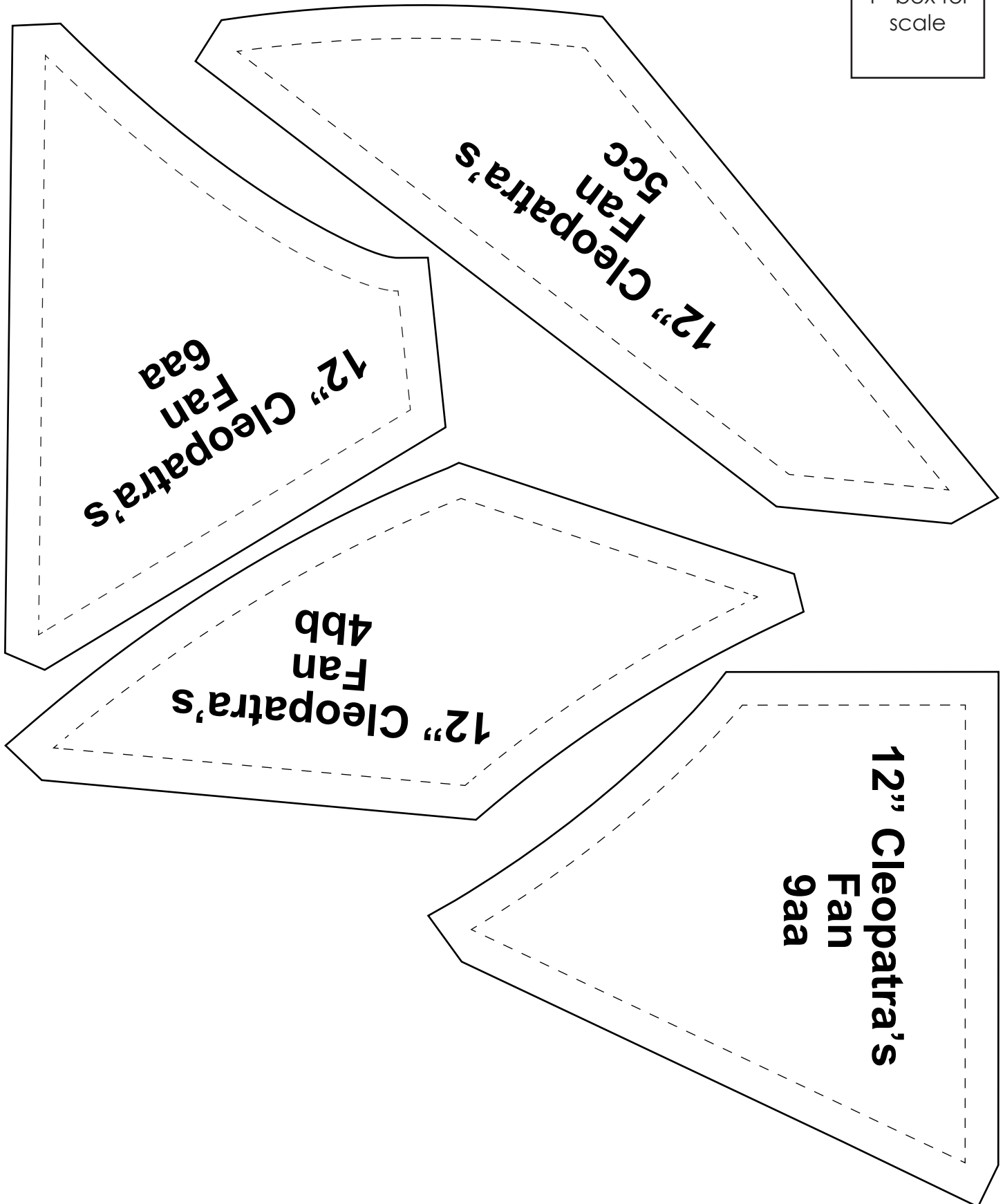
- Repeat Step 1 with the remaining block sets to make fifty-four whole blocks and twelve half blocks.

Templates

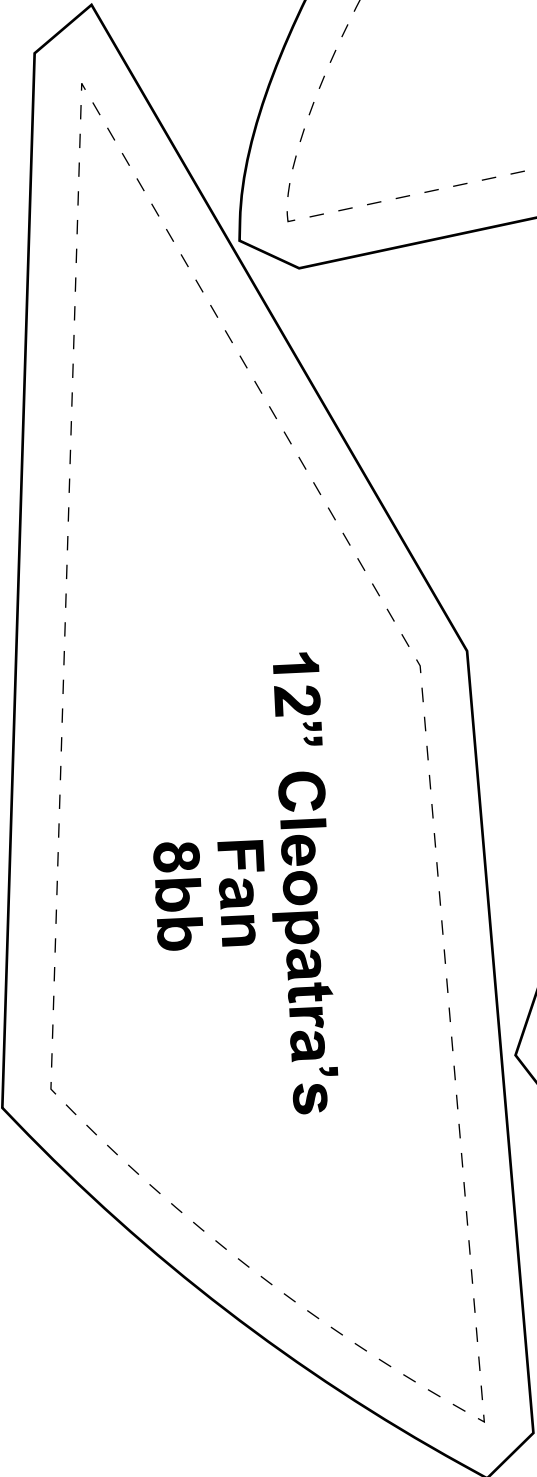
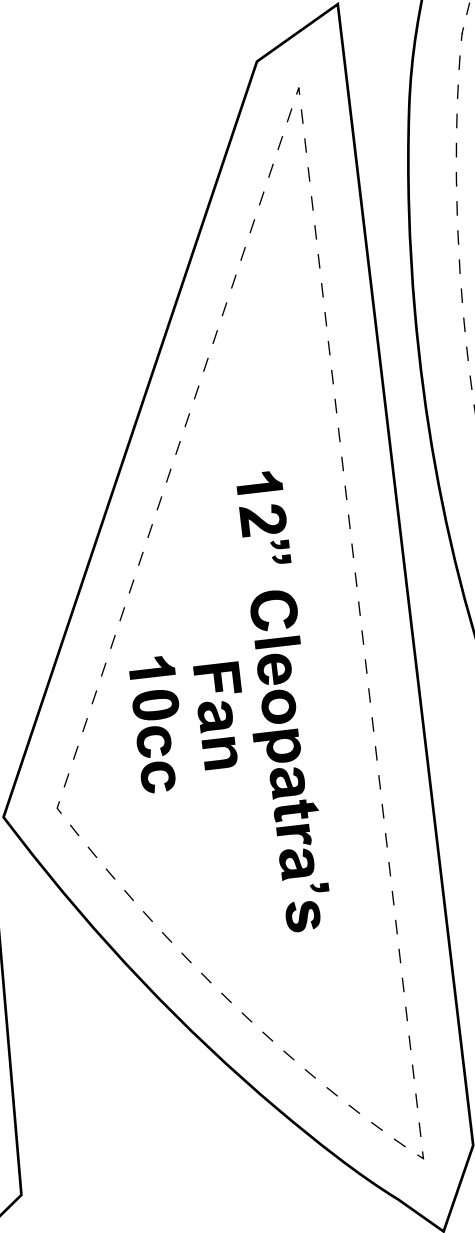
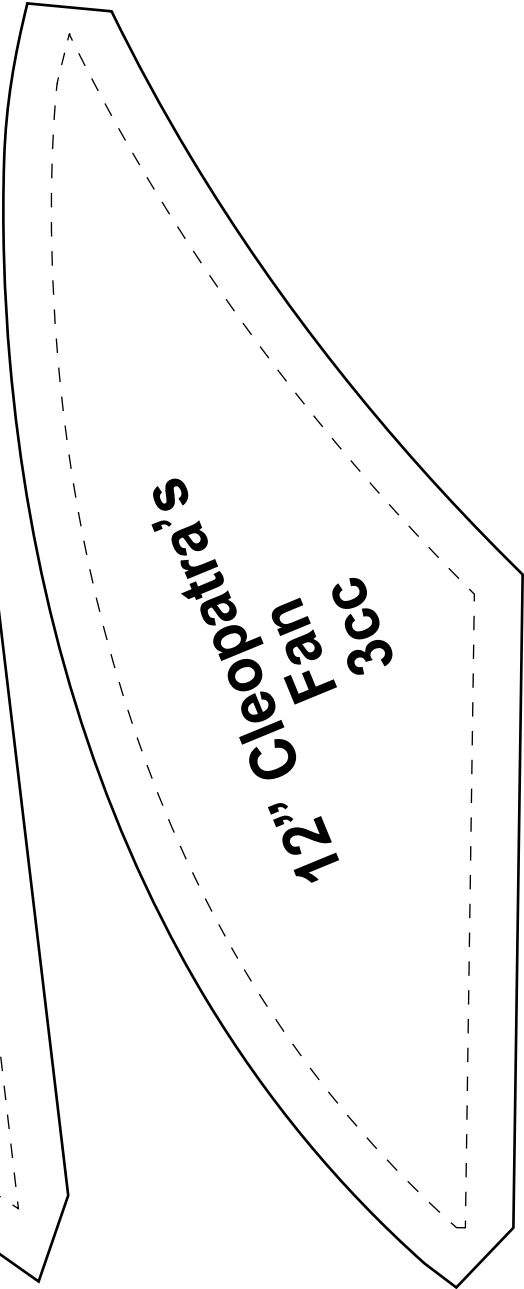
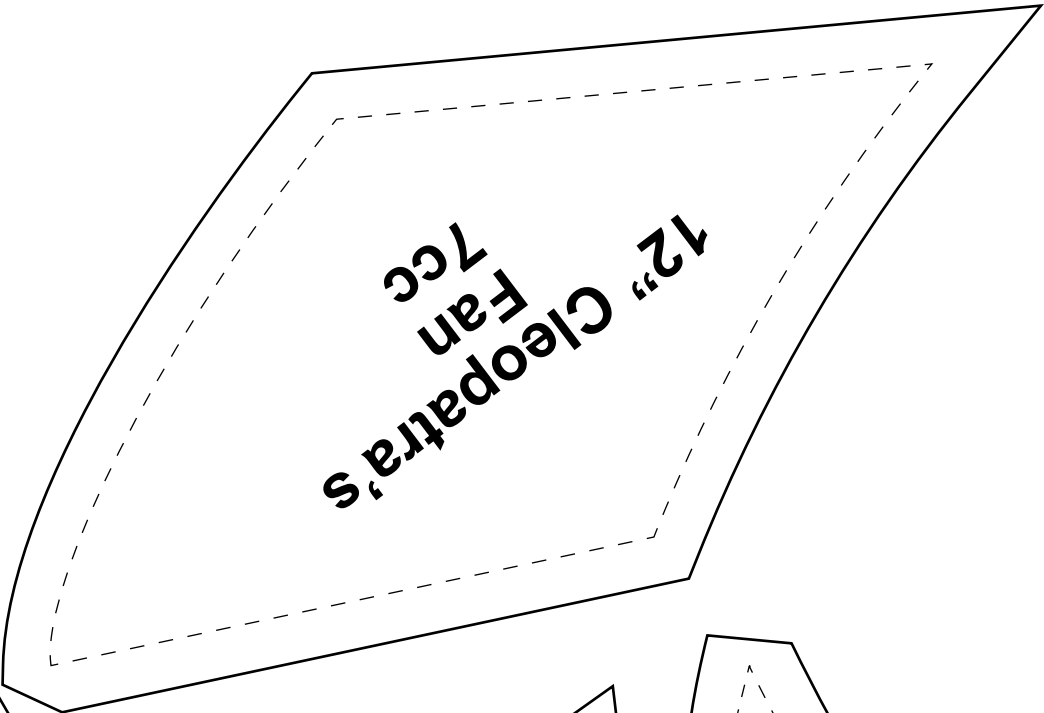
Print at 100%.

Check size printed correctly using 1" box for scale prior to cutting fabric.

1" box for
scale



1" box for
scale



1" box for
scale

