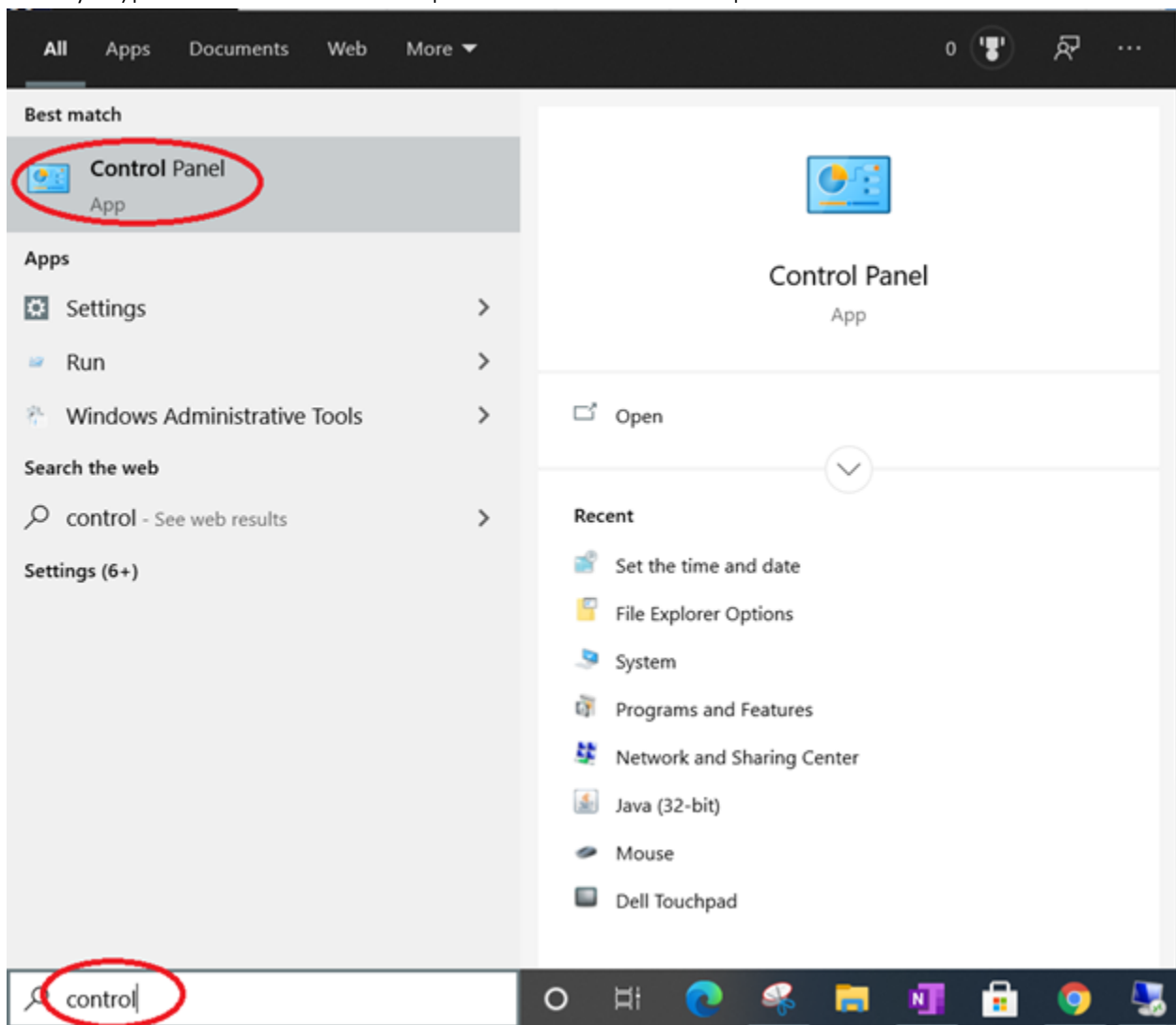


TECH TIP

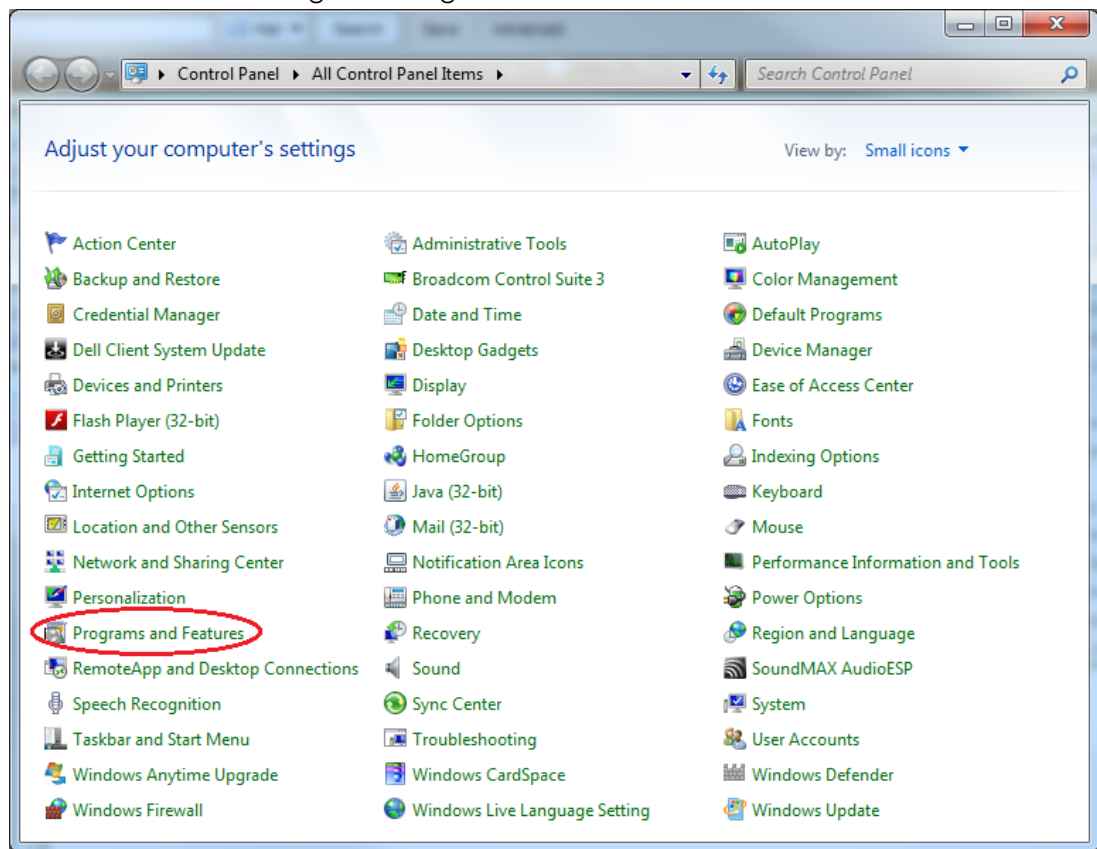
DETERMINE YOUR INSTALLED JAVA AND ACTIVE JAVA DRMCNATTY HOSTING

1) Type Control in the search panel to find the control panel.



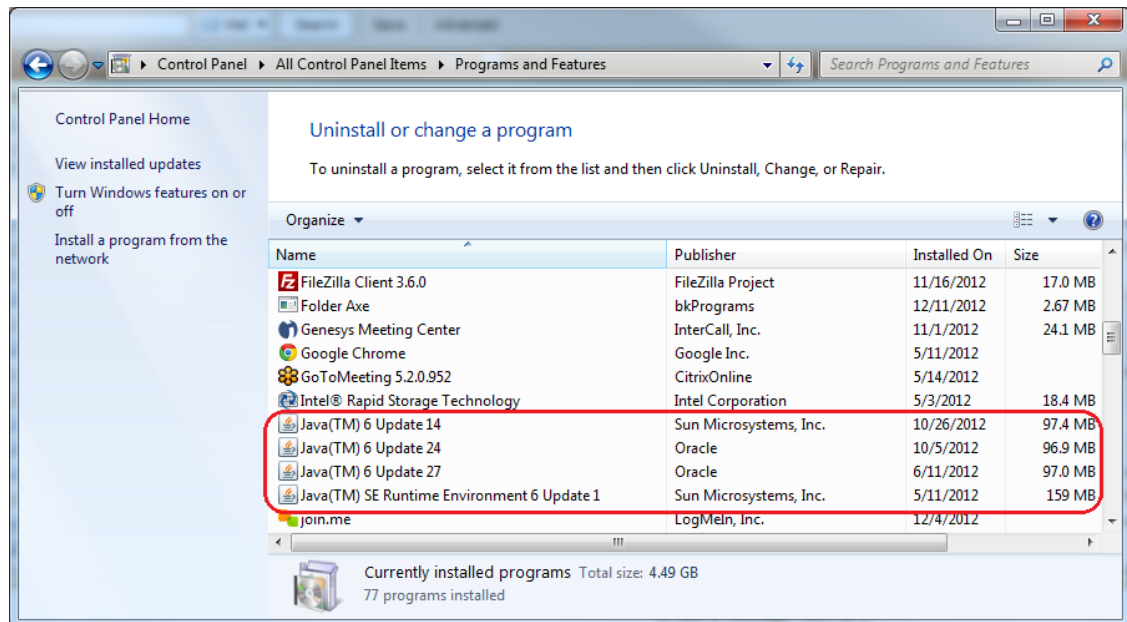
DETERMINE YOUR INSTALLED JAVA AND ACTIVE JAVA

2) From the Control Panel go to "Programs and Features"



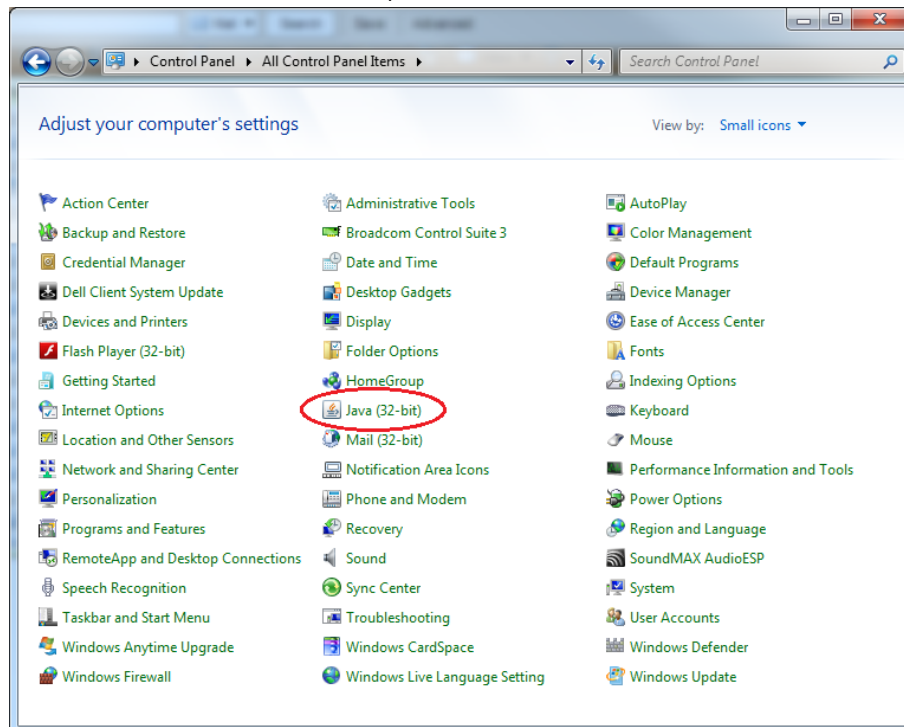
DETERMINE YOUR INSTALLED JAVA AND ACTIVE JAVA

- 3) You are looking for things along the lines of "JAVA (TM)"; "JAVA Runtime"; "Jrockit"; "JavaLauncher"; etc.



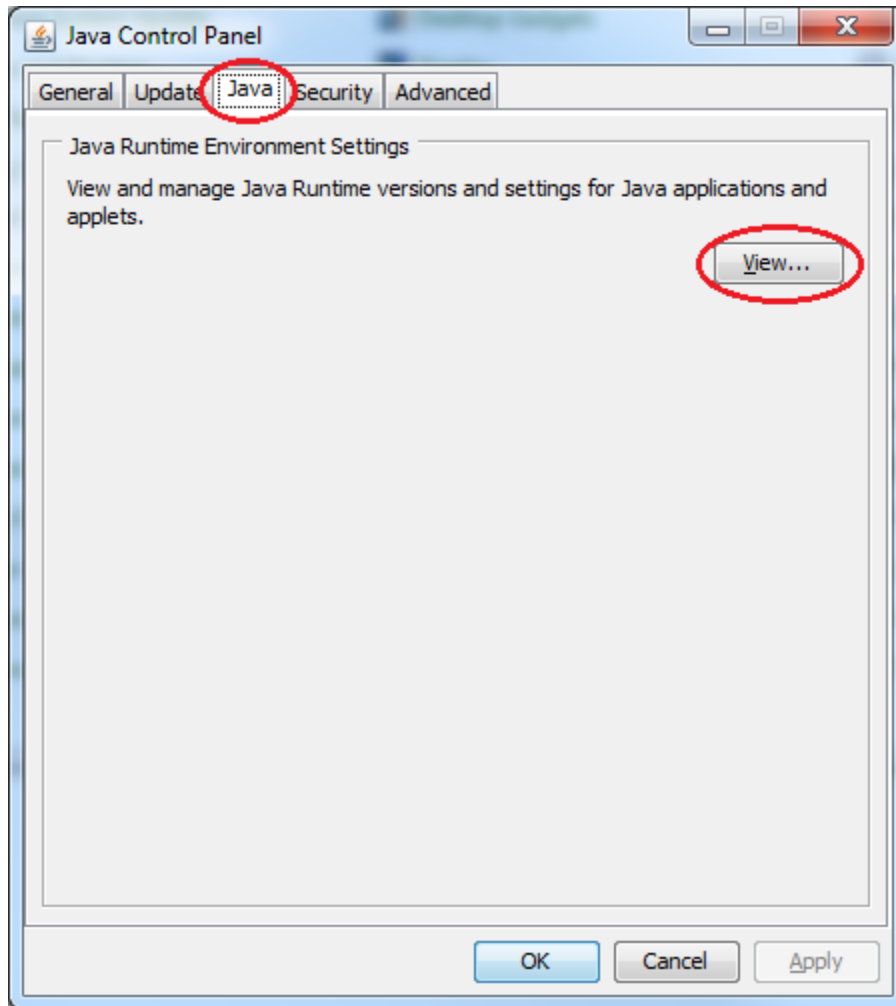
Those would be the Java version you have installed on your computer.

- 4) To see what Java are currently turned on, at the Control Panel Click "JAVA"



DETERMINE YOUR INSTALLED JAVA AND ACTIVE JAVA

- 5) Under the "Java" tab click "View"



DETERMINE YOUR INSTALLED JAVA AND ACTIVE JAVA

- 6) Those that have the "Enabled" Check box checked are Active

