

Hospital, Chamber team up to provide behavioral health services at no charge

Help during this challenging time

SUBMITTED BY LAKE CHELAN COMMUNITY HOSPITAL & CLINCS

CHELAN/MANSON - The COVID 19 outbreak and stay at home orders have impacted people in our community in many ways. In the atmosphere of uncertainty and stress which has resulted, many have experienced a range of emotional concerns including anxiety, ongoing worry, and depressed mood. Lake Chelan Community Hospital hopes to assist those impacted. We are offering behavioral health services to those (Lake Chelan) Chamber of Commerce employers, businesses, and employees as well as school district employees and emergency responders in our community who are experiencing the emotional impact associated with the coronavirus. These services apply to family and household members 16 years of age and older.

Our services will include an initial evaluation, consultation for medication management as well as follow up counseling sessions. The overall goal will be to help people get through this uncertain and challenging time. Our team includes two psychiatric mental health nurse practitioners and a psychologist. We are part of the Lake Chelan community and look forward to assisting you. Services will be provided without charge.

We will also be offering informational groups on coping with the impact of the coronavirus on people's lives.

For further information or to schedule an appointment, call 509-682-6134.

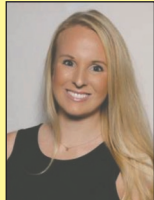
Be safe and be well.



Kathy Hevly
MSN,
PMHNP-BC



John Arnold
Psychologist
Ph.D.



Lindsay Richerson
DNP,
PMHNP-BC

COVID-19 cases continued to climb in Chelan, Douglas counties

Free masks available

EAST WENATCHEE - As of Monday, July 13 there are 532, with 139 new cases in the last seven days, and 216 new cases in the last 14 days (279.8 per 100,000). Three from Chelan County are hospitalized at Central Washington Hospital in Wenatchee. Douglas County has 365 cases, with 91 in the last seven days and 139 in the last 14 days (320.1 per 100,000) Two from Douglas County are hospitalized. The number of deaths remains at nine.

Chelan-Douglas Health District has changed how they are reporting the 19 under age group. That is now divided into two age groups. In the 0-9 age group there are 42 cases, 10-19 89 cases, 20-29 213 cases, 30-39 169 cases, 40-49 164 cases, 50-59 199 cases, 60-69 51 cases, 70-79 28 cases and over 80 22 cases.

Chelan had two new cases on Friday, Orondo two and Bridgeport five.

As of June 10 Chelan and Douglas counties are in a modified Phase 1.5 re-opening.

As of June 16 Okanogan County has 159 cases as of July 7, and two deaths. There were 71 new cases, from June 24 through July 7. There 17 news cases in Brewster, several of those involved long term care). They are now in Phase 2.

Social Distancing and wearing a mask is good, out of concern for preventing viral spread to others versus catching the virus from someone else.

Free face masks available to visitors, locals and businesses.

The Lake Chelan Chamber has free masks for the public. They can be picked up at the Lake Chelan Chamber of Commerce Visitor Center Monday-Friday 10 a.m.-4 p.m.

Lake Chelan Valley Events

*Manson Farmers Market:
July 15, 18*

MANSON - The Manson Farmers Market is opens for their summer season and will hold markets each Wednesday and Saturday through September. Sales begin at 8:30 a.m. and continue until approximately noon. All required safety procedures will be followed- hand sanitized at entrance, social distancing and masks recommended for shoppers. All vendors will be wearing masks and using hand sanitizer.

*Chelan Evening
Farmers Market: July 9*

CHELAN - Chelan Thursday Evening Farmers market is open now thru the end of September, 4-7

SEE EVENTS ON PAGE 2

Tri-county fairs pull the plug on 2020

Virtual shows and sales proposed

By MIKE MALTAIS
STAFF WRITER

NCW - Several flagships of the North Central Washington fall entertainment season will remain in port this year with recent announcements that the North Central Washington Fair in Waterville, the Chelan County Fair in Cashmere, and the Okanogan County Fair in Okanogan have been either cancelled or so recommended due to the coronavirus pandemic.

As of July 3, Okanogan County was in Phase 2 of the state's Safe Start Washington four-phase reopening program. Chelan and Douglas counties remained in modified Phase 1-1.5 status. Phase 1 bans all gatherings while Phase 2 restricts gatherings of no more than five persons outside a family group. Phase 3 allows up to 50 people in a gathering but only Phase 4 permits unlimited numbers.



Courtesy chelancountyfair.com
Chelan County Fair

In a June 11 announcement on its Facebook page the Chelan County Fair (CCF) officials advised that the CCF has been postponed for the 2020 season.

"All possible avenues or changes were explored but none could meet the requirements outlined in Washington's Safe Start reopening plan," the announcement said. "With Chelan County only just now getting into a 1.5 phase



Courtesy ncwfair.org
NCW Fair
BELOW: Virtual Sale



"All possible avenues or changes were explored but none could meet the requirements outlined in Washington's Safe Start reopening plan," the announcement said. "With Chelan County only just now getting into a 1.5 phase



Courtesy okangancountyfairgrounds Facebook
Okanogan County Fair

it became obvious that our county may not even move to Phase 4 until after our Fair."

CCF officials are busy on an alternate plan to accommodate youngsters who purchased fair animals.

"At the very least we will have some form of livestock sale...to help these kids get their livestock projects completed and the animals sold," the CCF posting said.

SEE CANCELLED ON PAGE 2

Work begins on Emerson Village



RuthEdna Keys/LCM

Work has begun on Chelan Valley Housing Trusts first community, Emerson Village. Situated on the corner of East Chelan Avenue and North Emerson Street, or as Executive Director Mike Cooney calls it, the corner of Hope and Unity. Last week Chelan Concrete and workers were busy pumping concrete in foundation forms. Emerson Village is a 5-townhome development. Each of the five townhomes will be two stories, with two bedrooms and 1.5 baths, and will sell for \$200,000. The builder, K&L homes in Chelan owned by Kevin Aho, is making an in-kind donation with below market rate construction costs. Move-in is expected before the end of the year. For information on the housing trust and how to donate money or land, serve on the board, volunteer, or submit a homebuyer application visit chelanvalleyhousing.org

The Vine Coffee becomes newest partner with The Community Center at Lake Chelan

SUBMITTED BY SEVEN ACRES FOUNDATION

CHELAN - Continuing to fulfill its goal of partnering with top quality people, organizations and companies in the area, the Seven Acres Foundation has reached an agreement with Holly and Ryan Moody to lease space in the Community Center at Lake Chelan for their new business venture, The Vine Coffee. The coffee shop will be the exclusive convenience food and beverage vendor at the Center, and it's expected to provide a destination experience for all area residents, not just those patrons who use Community Center for recreational and other activities.

"We are extremely excited about the partnership we've established with this wonderful new facility, mainly because of the great people involved with the

project, and the fact that it enables us to give back to the community we've enjoyed living in for so many years," said Holly Moody.

"Building the Center is such a great cause for our area, so we're thrilled to be a part of it. We've dreamed about having our own small business like this for many years, and now it's time to take the plunge."

Moody says that in addition to serving a variety of coffee drinks, she also plans to offer juices, breakfast sandwiches, paninis, homemade cookies, pre-packaged foods, and many other items. The Vine Coffee will be located in a prime location near the front door of the Center, providing an indoor parlor style environment in addition to having outdoor tables and chairs.

The mission of the Community Center at Lake Chelan is to connect people with the resources they need and



Courtesy The Community Center at Lake Chelan
Ryan and Holly Moody

with each other in order to enhance the quality of life in the Lake Chelan Valley.

Seven Acres Foundation is continuing fundraising efforts for the CCLC and

expects to begin construction no later than the Spring of 2021. To learn more or donate to the campaign, please visit www.ccatlakechelan.org

SHOP LOCAL

During this difficult time support your neighbors
Most local businesses offer curbside service or delivery

INSIDE THIS WEEK

Community/School 1-6
Church News 6
Obituaries/Death Notices 2
Chelan Senior Menu 2

Classified Index
Classifieds, Puzzles 7-8
Public Notices 8

Inserts
Safeway
Manson Bay Market

Business & Services,
Health Care Directory 2



\$1

310 E. Johnson Ave.,
P.O. Box 249
Chelan, WA 98816-0249
509-682-2213
www.lakechelanmirror.com