

# The Fall of Fort St. Elmo

Ray SCIBERRAS

staggered breathing

**A**

12

**B** Più mosso ♩ = 61 molto rit. **C** Tempo primo ♩ = 55

23

**D** A tempo ♩ = 55 **E** Moderato ♩ = 100

33

39

**F** **G** Allegro ♩ = 120

48

56

65

**H**

73

9

88



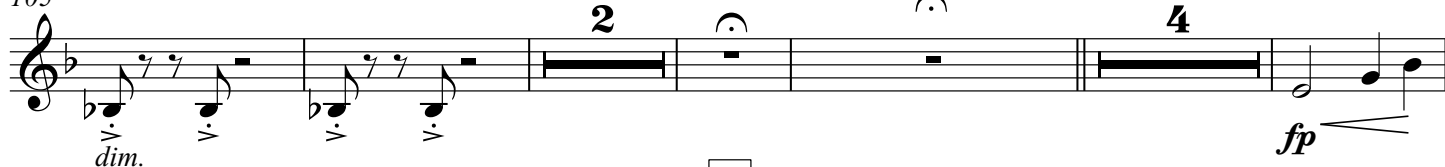
94



100



105



116



122



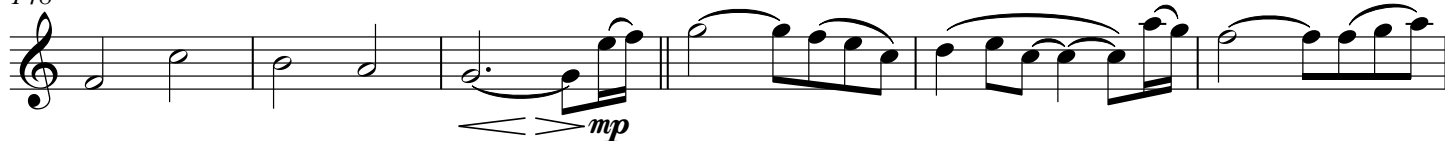
134



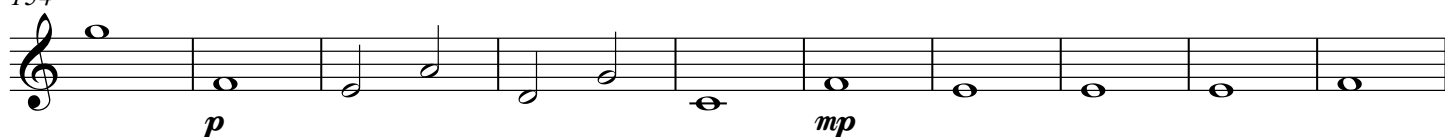
142



148



154



## Euphonium in B♭

3

164

170

*mf* *f*

**P**

171

molto rall. **P** A tempo

178

183

184 **Q** Allegro ♩ = 120

191

*mp* *f* *mf* *f* **R** *ff*

192

198

*f*

199

205

*f* *fp* *f* *fp* *f* *f* *f*

206

211

*fp* *f* *fp* *f*

212

216

*dim.*

217 rall. **S** Lento ♩ = 55 staggered breathing **T**

226

*p*

227

231

*mf*

232

237

*ff*